

# HIWIN LAS4 Series

**LAS4**

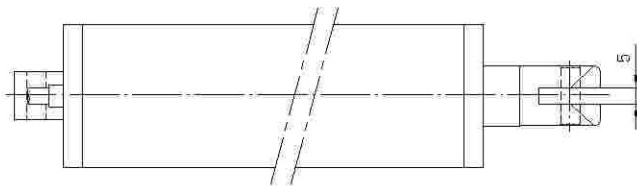


Screw type	ACME
Weight*	1.36 kg
Protection	IP 54
Compatible controller	LAK2
Working temp	+5°C ~40°C

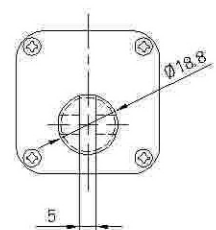
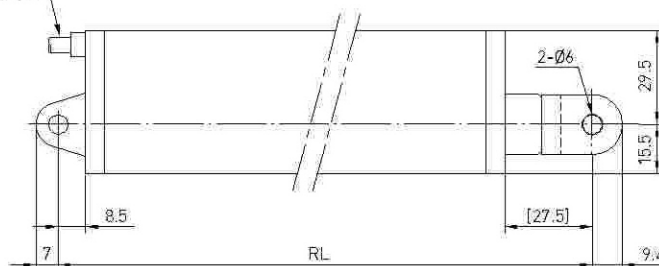
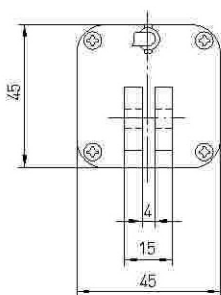
\* Stroke length 200 mm

\* Option: [1] IP65

- $RL=S+222.5$   
 RL: Retracted length  
 S: Stroke length

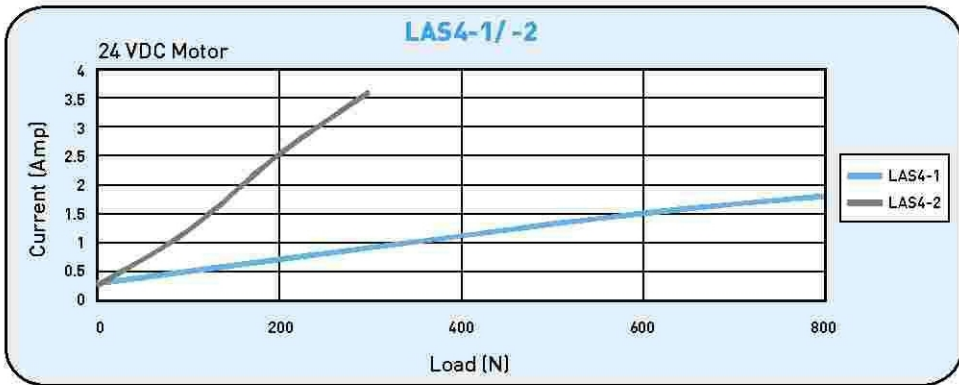
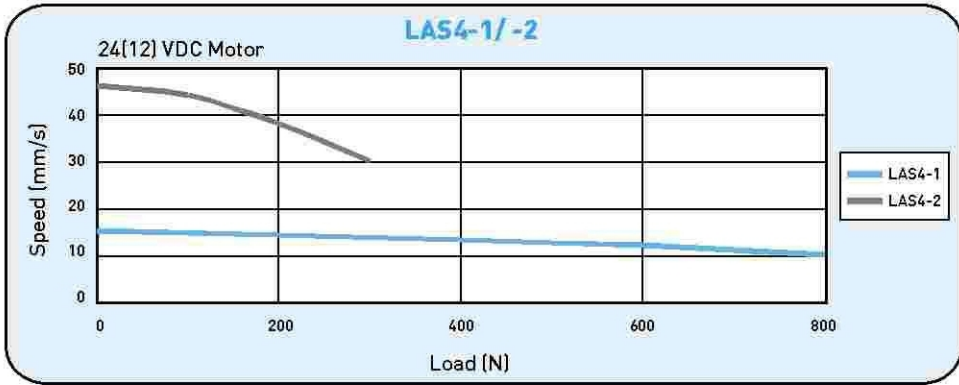


MOTOR CABLE  
 MOTOR CABLE LENGTH=1M  
 MOTOR CABLE DIAMETER=Ø5

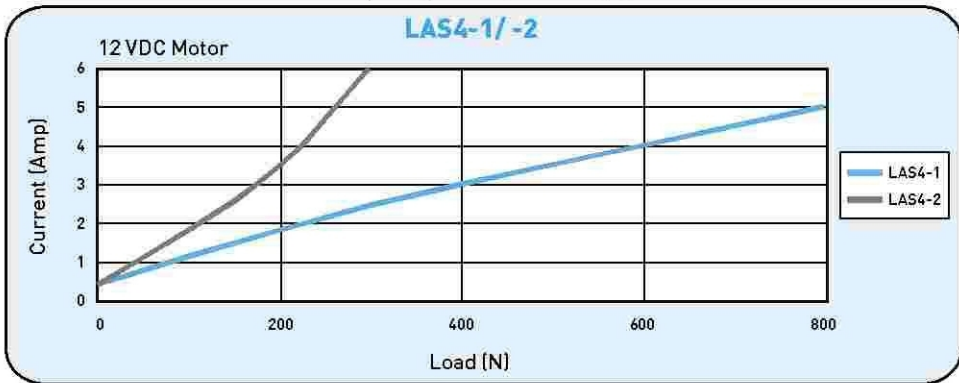


# ● LAS4 Specifications

Model	Thrust max. [N]	Pulling max. [N]	Holding max. [N]	Speed (mm/s)		Standard stroke (mm) : S					Duty cycle %	Max.current [A]	
				Load=Max.	Load=0	100	150	200	250	300		12VDC	24VDC
LAS4-1	800	800	800	10	15	100	150	200	250	300	10	5	1.8
LAS4-2	300	300	200	30	46	100	150	200	250	300	10	6	3.6



Note: The test results are obtained by using 24VDC power supply.



Note: The test results are obtained by using 12VDC power supply.

# ● Ordering Information

**LAS4 - 1 - 1 - 200 - 12 E**

Model number

1: Basic model complete with internal limit switches

Stroke length

Special models according to Client's requirement (Ignore this part of the serial number if not available)

Voltage